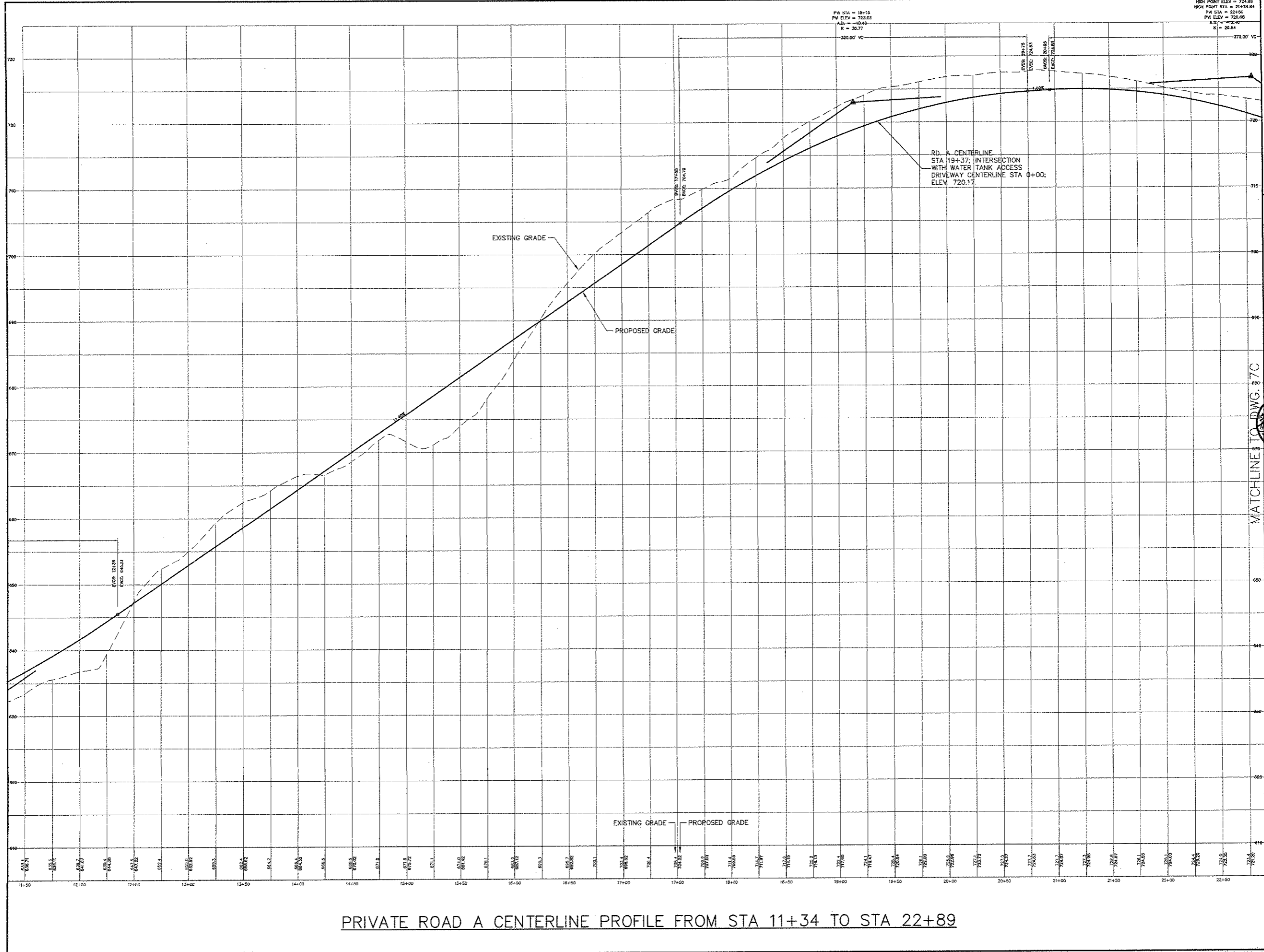


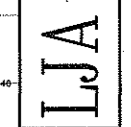
D:\LA FILES\PROJECTS\ROADS\RD A\DWG.7C 8/2/04 4:12:31 PM Doc 800 NCC1.1 & 2.dwg ARCH:spw/et (20.00 x 42.00 inches), 1:1



PRIVATE ROAD A CENTERLINE PROFILE FROM STA 11+34 TO STA 22+89

REV.	DESCRIPTION	DATE
0	GENERAL REVISIONS	2/8/05
1	GENERAL REVISIONS	6/20/05
2	GENERAL REVISIONS	03/15/06

LEONARD JACKSON ASSOCIATES
CONSULTING ENGINEER
29 FORDHAM AVENUE, 10TH FLOOR
ROSELAND, NJ 07068
PHONE: (908) 354-4332 FAX: (908) 354-4460



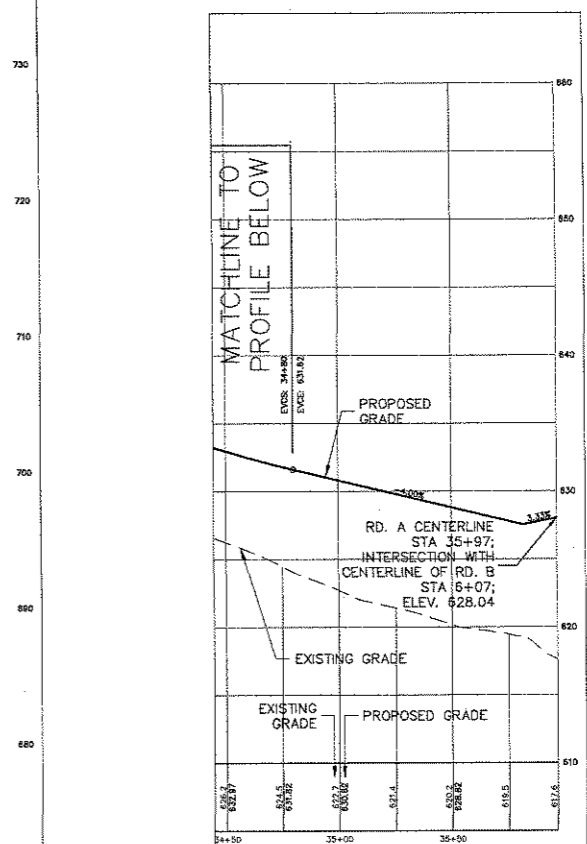
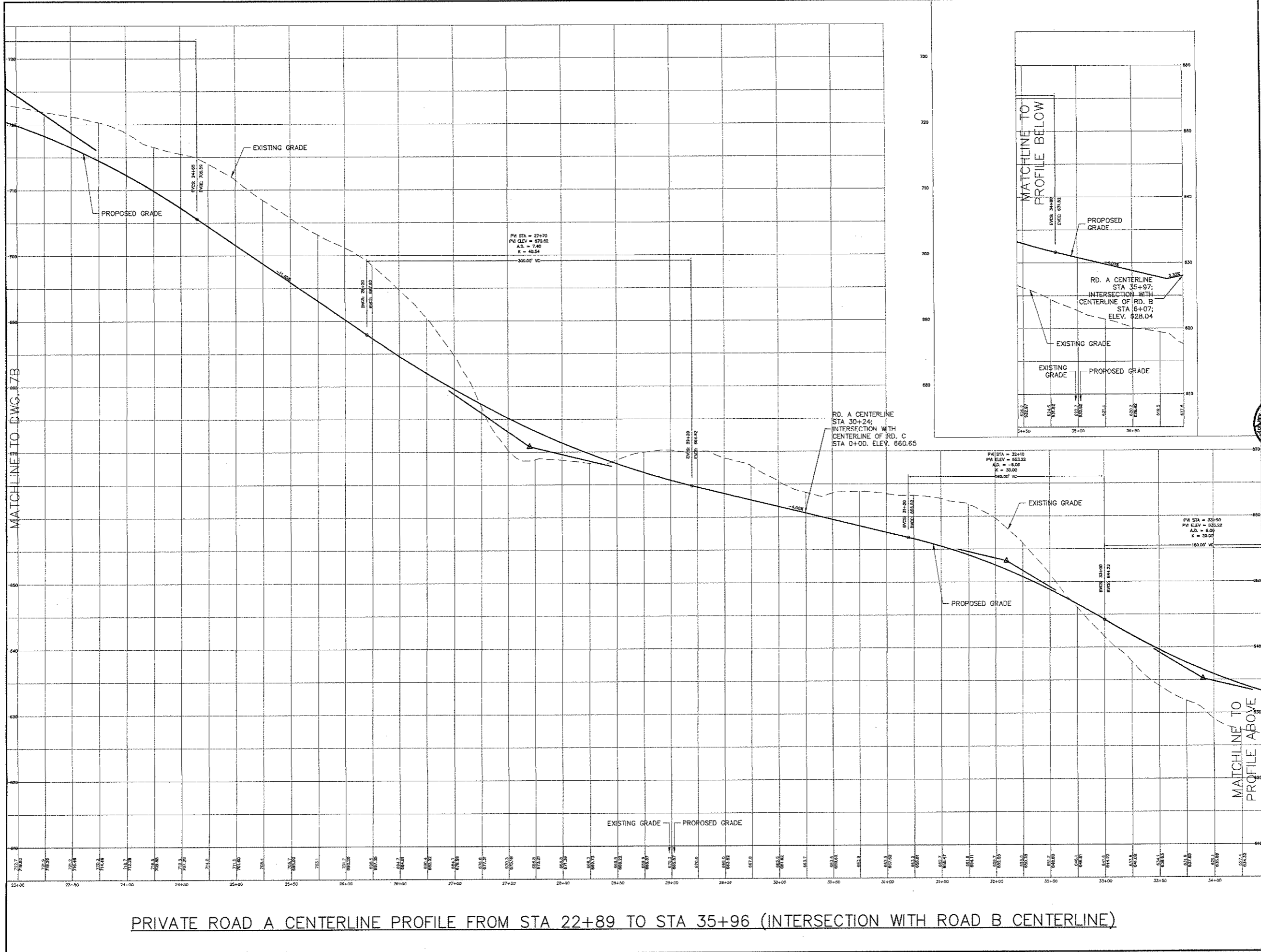
BALD HILL ESTATES
TOWN OF MONROE
ORANGE COUNTY, NEW YORK

LJA

ROAD PROFILES (2 OF 6)

Job number: 00046
Drawn by: C.F.I.
Date: 8/2/04
Scale: HORIZ. 1"=30'
VERT. 1"=5'
Drawing Number: 7B
20 of 56

D:\LJA\PROJECTS\ROADWORK\DRAWINGS\PROFILES\PROF.DWG. 8/18/2006 4:12:50 PM. Doc: 1800 MDC1.s & 2.s.pct. ARJH: expand E1 (20.00 x 42.00 inches), 1:1



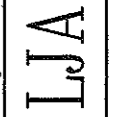
MATCHLINE TO DWG. 7/B

MATCHLINE TO PROFILE ABOVE

PRIVATE ROAD A CENTERLINE PROFILE FROM STA 22+89 TO STA 35+96 (INTERSECTION WITH ROAD B CENTERLINE)

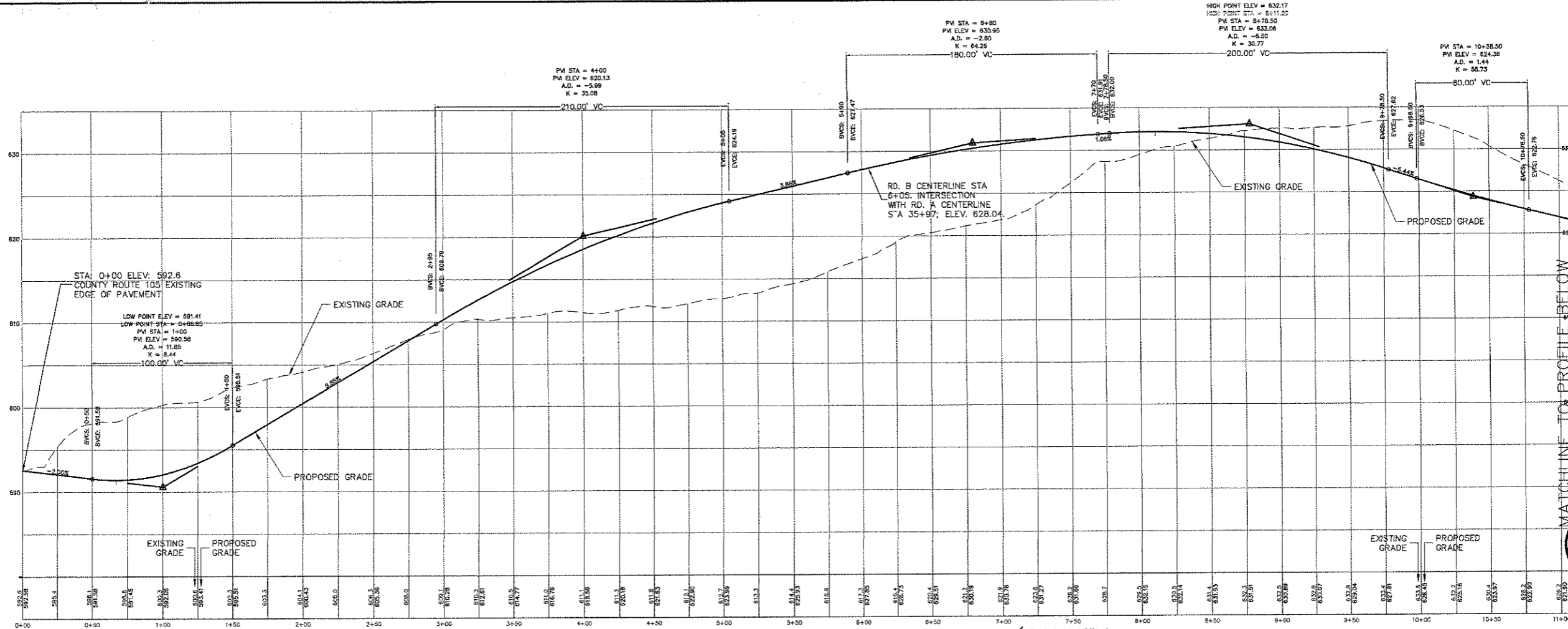
REV.	DESCRIPTION	DATE
6	GENERAL REVISIONS	2/6/06
4	GENERAL REVISIONS	6/20/05
3	GENERAL REVISIONS	05/19/05

LEONARD JACKSON ASSOCIATES
 CONSULTING ENGINEERS
 78 FREMONT LAMARQUE DRIVE, FARMINGDALE, NEW YORK 11737
 PHONE: (516) 334-1122 FAX: (516) 334-4000

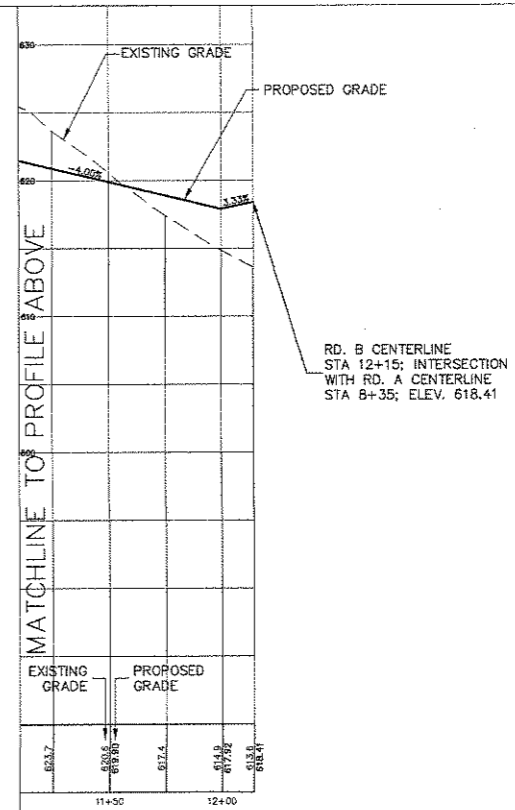


BALD HILL ESTATES
 TOWN OF MONROE
 ORANGE COUNTY, NEW YORK
ROAD PROFILES (3 of 6)

Job number: 00046
 Drawn by: c.f.h.
 Date: 8/2/04
 Scale: HORIZ. 1"=30'
 VERT. 1"=5'
 Drawing Number: 7C
 21 of 56



PUBLIC ROAD B CENTERLINE PROFILE FROM STA 0+00 (COUNTY ROUTE 105 E.O.P.) TO STA 12+15 (INT. W/ ROAD A STA 8+35)



MATCHLINE TO PROFILE BELOW

REV.	DESCRIPTION	DATE
1	GENERAL REVISIONS FOR SETS SUBMISSION	9/15/05
2	GENERAL REVISIONS	2/16/05
3	GENERAL REVISIONS	6/20/05
4	GENERAL REVISIONS	03/15/05

LEONARD JACKSON ASSOCIATES
 CIVIL ENGINEERS
 28 PARKWAY SQUARE, SUITE 200, PHOENIX, NEW YORK 10970
 phone: (914) 354-4332 fax: (914) 354-4477

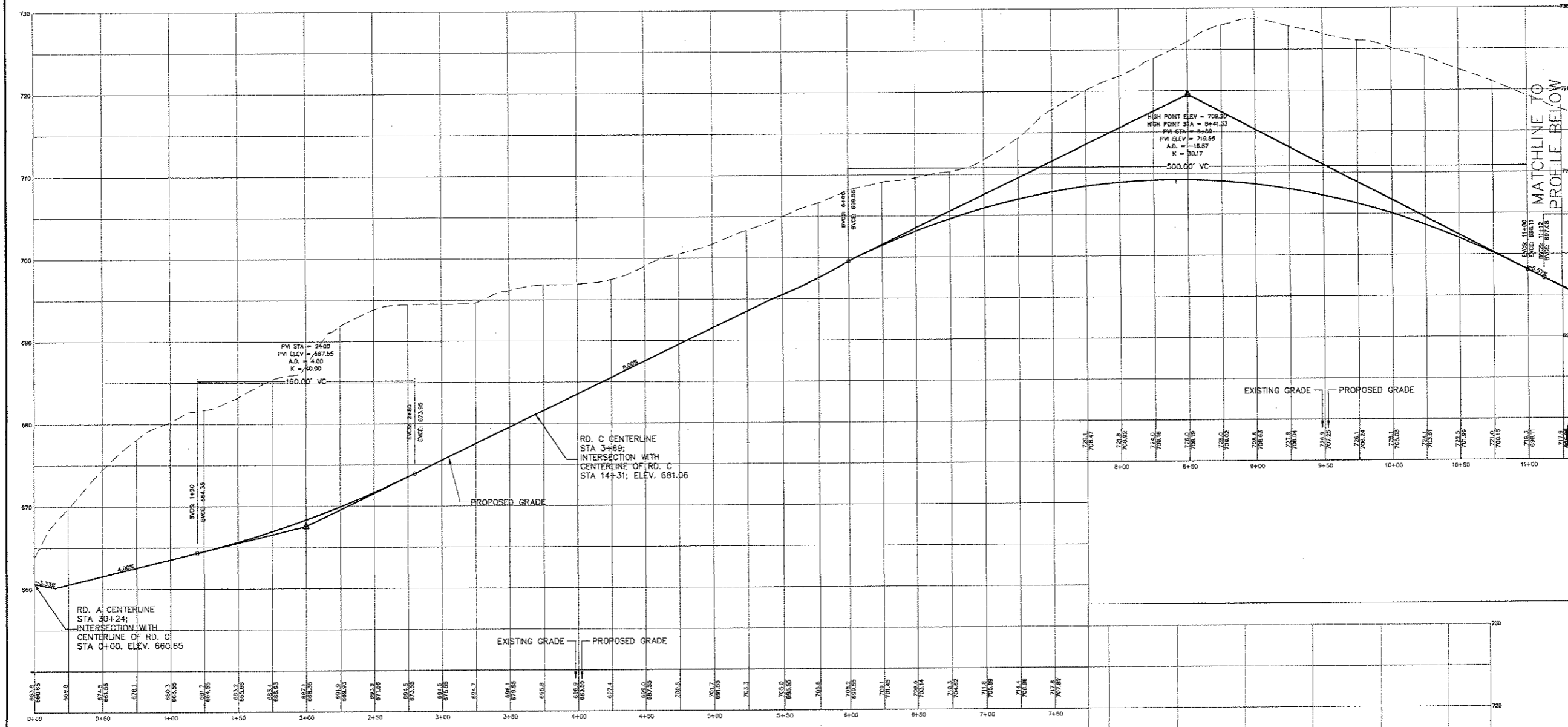


BALD HILL ESTATES
 TOWN OF MONROE
 ORANGE COUNTY, NEW YORK
 ROAD PROFILES (4 of 6)

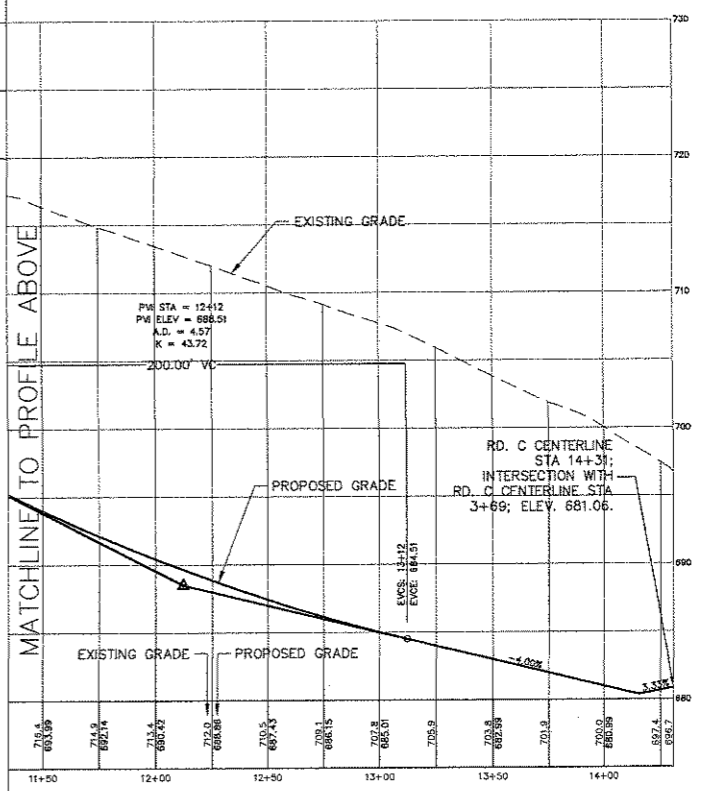
Job number: 00046
 Drawn by: c.f.i.
 Date: 8/2/04
 Scale: HORIZ. 1"=30'
 VERT. 1"=5'
 Drawing Number: 7D
 22 of 56

D:\LA FILES\PROJECTS\ORANGE\ROADS\BIBL\460 PROF.dwg, 12:18:18 PM, 03/16/2006 4:13:18 PM, C:\msdoso\1.8.2\acad.acpl, ARCH required (E) (30,00 x 42,00 inches), 1:1

D:\LJA\PROJECTS\WOODBRIDGE\SHS\RD PROJ\DWG.E. 8/19/04 4:17:47 PM, C:\9901\N6C1\A.2.dwg, ARCH required 61 (30.00 x 42.00 inches), 1:1



PRIVATE ROAD C CENTERLINE PROFILE FROM STA 0+00 (INT. W/ ROAD A CENTERLINE STA 30+24) TO STA 14+39 (INTERSECTION WITH ROAD C STA 3+69)



REV.	DESCRIPTION	DATE
1	GENERAL REVISIONS FOR SET SUBMISSION	9/15/05
2	GENERAL REVISIONS	2/5/05
3	GENERAL REVISIONS	6/20/05
4	GENERAL REVISIONS	03/15/05

LEONARD JACKSON ASSOCIATES
 CONSULTING ENGINEERS
 28 HEMPSTEAD TURNPIKE, NEW YORK, NY 11760
 PHONE: (845) 354-4300 FAX: (845) 354-4000



LJA
BALD HILL ESTATES
 TOWN OF MONROE
 ORANGE COUNTY, NEW YORK
ROAD PROFILES (5 OF 6)

Job number: 00046
 Drawn by: c.f.l.
 Date: 8/2/04
 Scale: HORIZ. 1"=30'
 VERT. 1"=5'
 Drawing number: 7E
 23 of 56

