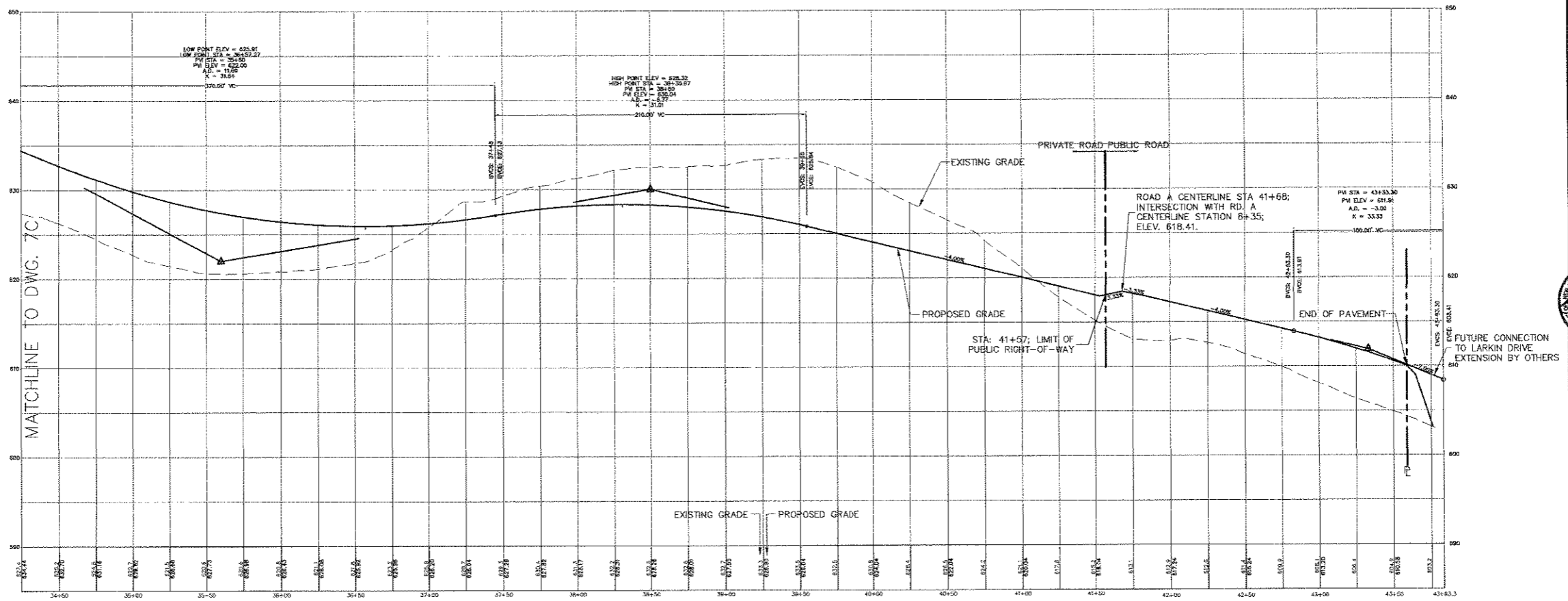


PRIVATE ROAD A CENTERLINE PROFILE FROM STA 11+34 TO STA 22+89





ROAD A CENTERLINE PROFILE FROM STA 34+25 TO STA 43+59

REV.	DESCRIPTION	DATE
9	GENERAL REVISIONS FOR SUBMISSION	8/2/04
8	GENERAL REVISIONS	7/19/04
7	GENERAL REVISIONS	7/19/04
6	GENERAL REVISIONS	7/19/04
5	GENERAL REVISIONS	7/19/04
4	GENERAL REVISIONS	7/19/04
3	GENERAL REVISIONS	7/19/04
2	GENERAL REVISIONS	7/19/04
1	GENERAL REVISIONS	7/19/04

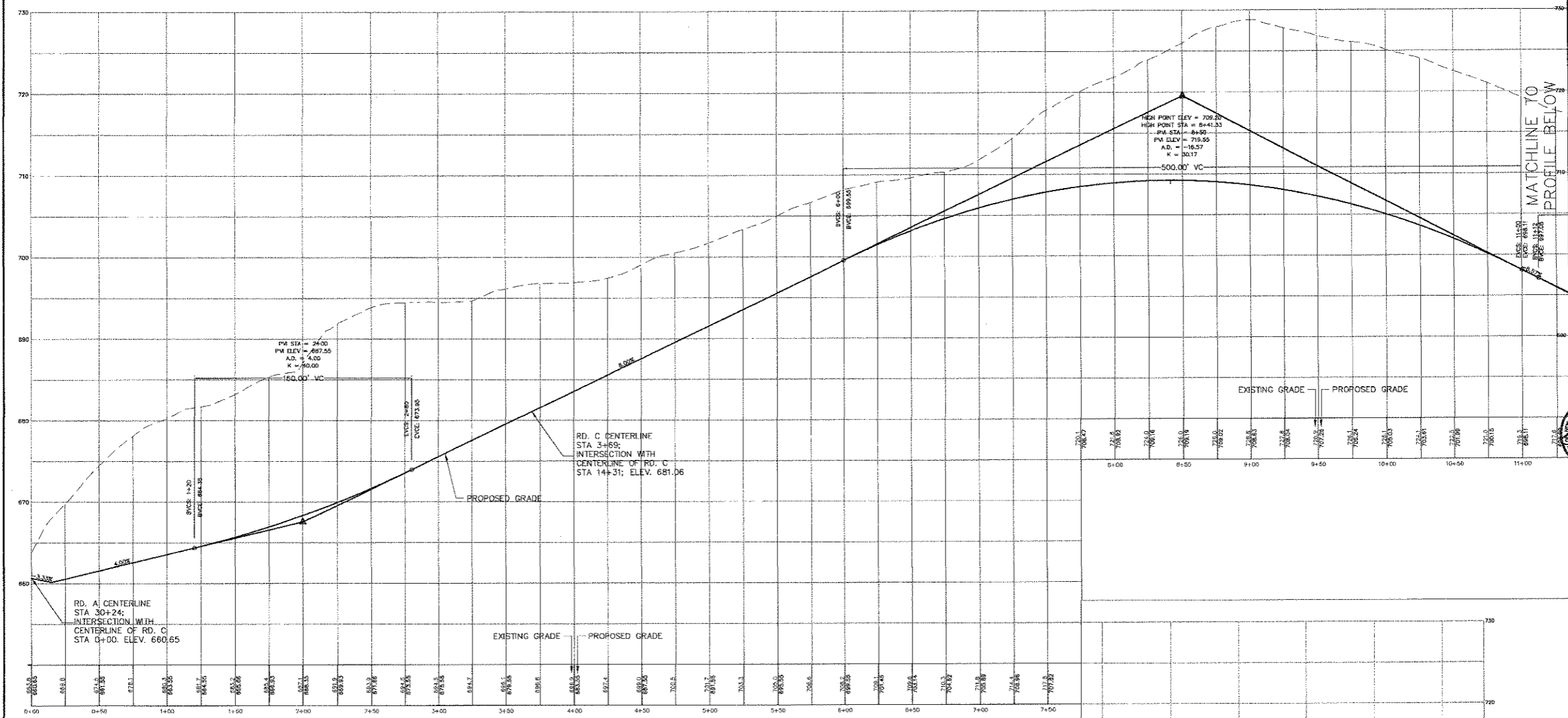


LEONARD JACKSON ASSOCIATES  
 CONSULTING ENGINEERS  
 29 HICKORY ROAD, SUITE 202, NEW YORK, NY 10979  
 PHONE: (845) 334-4422 FAX: (845) 334-4420

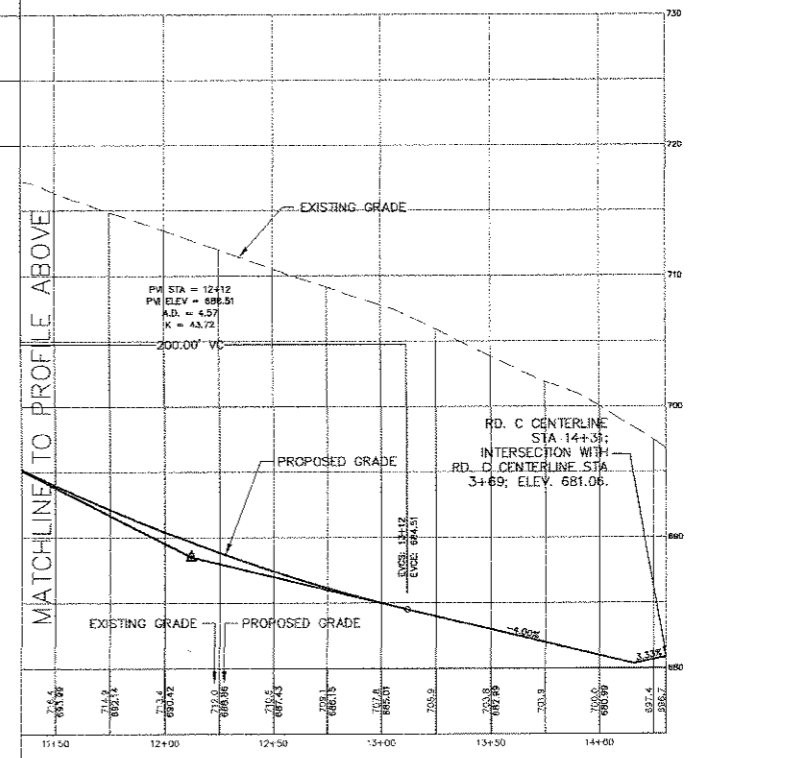
**LJA**

**BALD HILL ESTATES**  
 TOWN OF MONTICUE  
 ORANGE COUNTY, NEW YORK  
**ROAD PROFILES (4 of 6)**

Job number: 00046  
 Drawn by: c.t.l.  
 Date: 8/2/04  
 Scale: HORIZ. 1"=30'  
 VERT. 1"=5'  
 Drawing Number: 7D  
 22 of 56



PRIVATE ROAD C CENTERLINE PROFILE FROM STA 0+00 (INT. W/ ROAD A CENTERLINE STA 30+24) TO STA 14+39 (INTERSECTION WITH ROAD C STA 3+69)



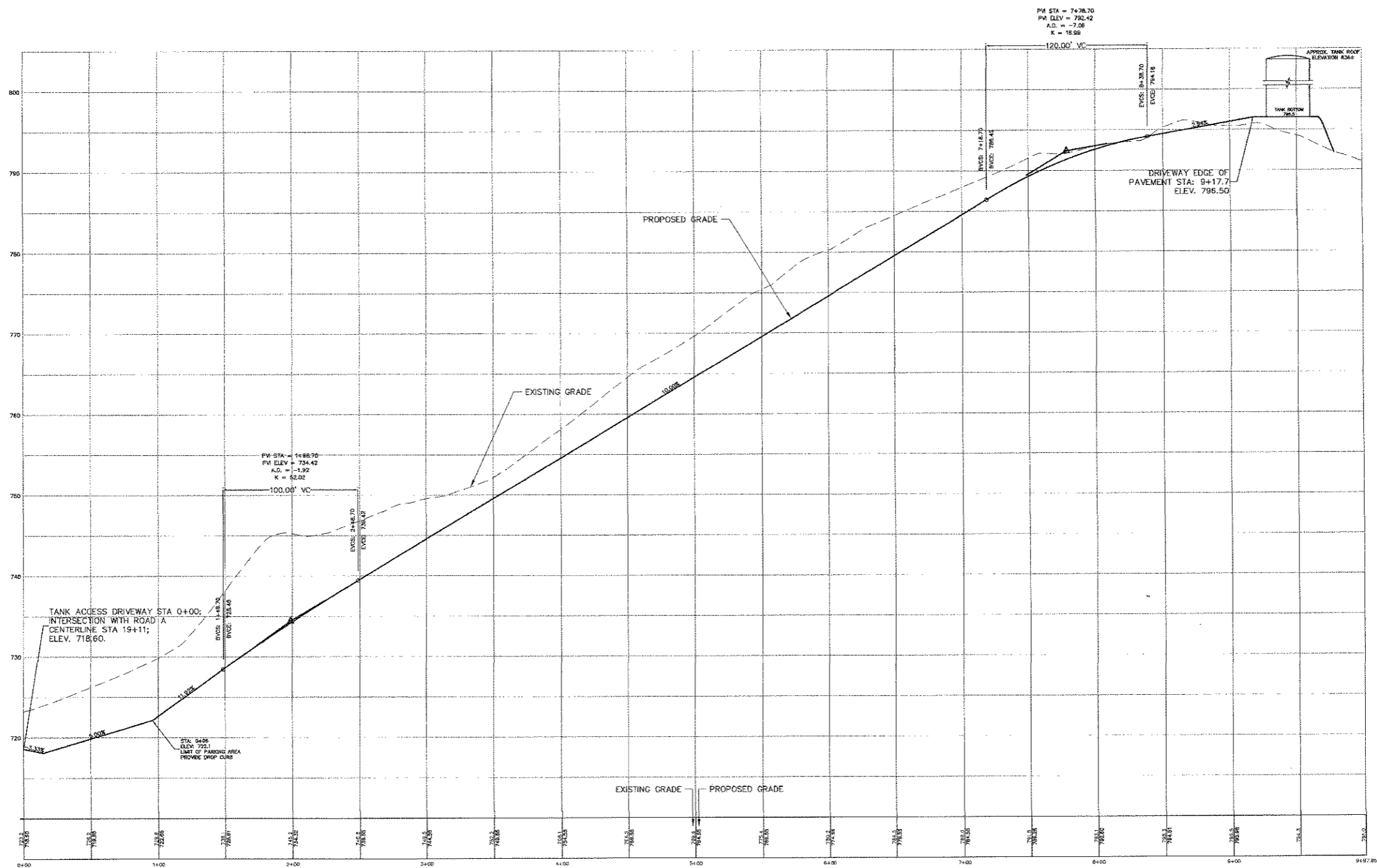
REV.	DESCRIPTION	DATE
6	GENERAL REVISIONS FOR SEE'S SUBMISSION	8/18/04
5	GENERAL REVISIONS	7/16/04
4	GENERAL REVISIONS	8/20/03
3	GENERAL REVISIONS	02/19/04

LEONARD JACKSON ASSOCIATES  
 CONSULTING ENGINEERS  
 25 WHEATLAND AVENUE, PALM BEACH, NEW YORK 10770  
 PHONE (908) 384-4342 FAX (908) 384-4401



BALD HILL ESTATES  
 TOWN OF MONROE  
 ORANGE COUNTY, NEW YORK  
 ROAD PROFILES (5 OF 6)

Job Number: 00046  
 Drawn by: c.f.l.  
 Date: 8/2/04  
 Scale: HORIZ 1"=30'  
 VERT. 1"=5'  
 Drawing Number: 7E  
 23 of 56



WATER TANK ACCESS DRIVEWAY CENTERLINE PROFILE (INT. WITH ROAD A STA 19+37 TO TANK)

REV.	DESCRIPTION	DATE
3	GENERAL REVISIONS	3/7/07
2	GENERAL REVISIONS	2/7/06
1	GENERAL REVISIONS	6/20/05
0	GENERAL REVISIONS	03/15/05



**LEONARD JACKSON ASSOCIATES**  
 CONSULTING ENGINEERS  
 28 FREDERICK MARSH DRIVE, PO BOX 10773  
 PALM BEACH, FL 33416-0773

**LJA**

**BAIRD HILL ESTATES**  
 TOWN OF MONROE  
 ORANGE COUNTY, NEW YORK  
**ROAD PROFILES (6 of 6)**

Job number:  
 00046  
 Drawn by:  
 c.f.l.  
 Date:  
 8/2/04  
 Scale:  
 HORIZ. 1"=30'  
 VERT. 1"=5'  
 Drawing Number:  
 7F  
 24 of 56